

# PTK5507 v1.0 Touchscreen User Manual



**NOTE:** Use these instructions in conjunction with the Installation Manual of the alarm panel with which this equipment is intended to be used.

**WARNING:** Read and save these instructions! Follow all warnings and instructions specified within this document and/or on the equipment.

# DSC

A Tyco International Company





# Table of Contents

Welcome Screen	2
Emergency Key	2
Arming and Disarming the System	3
Stay Arm (Arming the Perimeter)	3
Silent Exit Delay	3
Disarm	5
Away Arm	5
Bell/Siren Sounds After Away Arming	5
Remote Arming and Disarming	5
When Alarm Sounds	5
Intrusion (Burglary) Alarm Continuous Siren	6
Fire Alarm Pulsed Siren	6
Wireless Carbon Monoxide Alarm	6
Additional Options	6
Photos	6
Quick Exit	6
Time & Date Programming	6
Keypad Mode	6
Door Chime (Chime enable/disable)	6
Zone Status	7
Bypassed Zones	9
Bypassing Zones with a PTK5507	9
Troubles	10
Alarm Memory	11
Sensor Reset	11
Outputs	12
Options	12
Access Codes	13
User Code Attributes	13
Inherent Attributes (all codes except installer and maintenance)	13
Programmable Attributes	13
Bell Squawk Attribute	13
Partition Assignment Mask	13
Erasing an Access Code	14
Installer Menu	14
User Functions	14
Keypad Configuration	15
Chime Enabled/Disabled	16
Arming	16
Partition Status	17
PK5500/RFK5500/RFK5564/PTK5507 Global Status Screen	17
Keypad Mode	17
Reference Sheets	18
System Information	18
Access Codes	19
Sensor/Zone Information	20
Testing Your System	21
Testing Your Keypad Sounder and Siren	21
Testing Your Entire System	21
Walk Test Mode	21
Allowing Computer Access To Your System	21
Guidelines for Locating Smoke Detectors and CO Detectors	22
Household Fire Safety Audit	23
Fire Escape Planning	23

Always ensure you obtain the latest version of the User Guide. Updated versions of this User Guide are available by contacting your distributor.

---

## **IMPORTANT SAFETY INSTRUCTIONS**

To reduce the risk of fire, electric shock and/or injury, observe the following:

- Do not spill any type of liquid on the equipment.
- Do not attempt to service this product yourself. Opening or removing the cover may expose you to dangerous voltage or other risk. Refer servicing to qualified service personnel. Never open the device yourself.
- Do not touch the equipment and its connected cables during an electrical storm; there may be a risk of electric shock.
- Do not use the Alarm System to report a gas leak if the system is near a leak.

## **REGULAR MAINTENANCE AND TROUBLESHOOTING**

Keep your PTK5507 Touchscreen keypad in optimal condition by following all the instructions that are included within this manual and/or marked on the product.

### **HANDLING PRECAUTIONS**

Do not apply excessive force to the display surface or the adjoining areas since this may cause the color tone to vary.

### **CLEANING**

- If the display surface is contaminated, breathe on the surface and gently wipe it with a soft, dry cloth. If still not completely clean, moisten cloth with isopropyl alcohol.
- Do not use abrasives, water, thinners, solvents or aerosol cleaners (spray polish), any aromatic solvents, ketones etc. that may enter through holes in the PTK5507 Touchscreen keypad and cause damage.

### **TROUBLESHOOTING**

Occasionally, you may have a problem with your system. If this happens, your Alarm Controller will identify the problem and display an error message. Refer to the provided list when you see an error message on the display. If additional help is required, contact your distributor for service.

**WARNING:** This equipment, PTK5507 Touchscreen keypad shall be installed and used within an environment that provides the pollution degree max 2 and over-voltages category II non-hazardous locations, indoor only. It is designed to be installed, serviced and/or repaired by service persons only [service person is defined as a person having the appropriate technical training and experience necessary to be aware of hazards to which that person may be exposed in performing a task and of measures to minimize the risks to that person or other persons]. There are no parts replaceable by the end-user within this equipment

**WARNING:** Never obstruct the access to the Alarm controller to which this equipment is connected. These safety instructions should not prevent you from contacting the distributor and/or the manufacturer to obtain any further clarification and/or answers to your concerns.

IMPORTANT NOTICE

A security system cannot prevent emergencies. It is only intended to alert you and, if included, your central station of an emergency situation. Security systems are very reliable but they may not work under all conditions, and they are not a substitute for prudent security practices or life and property insurance. Your security system should be installed and serviced by qualified security professionals who should instruct you on the level of protection that has been provided and on system operations.

Introduction

The PTK5507 Touchscreen is an interactive touch-sensitive color LCD that can be used on any Power-Series v4.2 and greater control panel. Due to the custom requirements of individual installations, some of the features described here may perform differently than described. Refer to your Installer's Instructions for the details of your specific installation and to the User Manual for general security system information.

Specifications/Features

- Display ..... 7" TFT (800 × 480 pixel) Color Touchscreen
- Home button ..... Home/Calibration/Reset
- LED indicators ..... 4 (Ready, Armed, Trouble, AC)
- Dimensions (mounting) ..... 8.5" x 5.1" x 0.8" [127.9 mm (L) x 195 mm (W) x 20.35 mm (D)]
- Viewing angle ..... Horizontal viewing angle: 70° (typ.)
- Vertical viewing angle ..... 50° (top), 70° (bottom) (typ.)
- Brightness ..... 280 cd/m<sup>2</sup>
- Operating environment ..... -10°C to +55°C (14°F to 131°F)
- 5% to 93% relative humidity
- SD card slot holds any standard Secure Digital (SD) card (32 x 24 x 2.1 mm) containing photos
- Display language(s) ..... English

*NOTE: For best results, photo resolution should be 800 x 480; please use photo-editing computer software to adjust your photos to the correct size. Photos larger than 1280 x 720 cannot be displayed by the Touchscreen.*

## Welcome Screen

The date & time are displayed in the upper right corner of the screen.

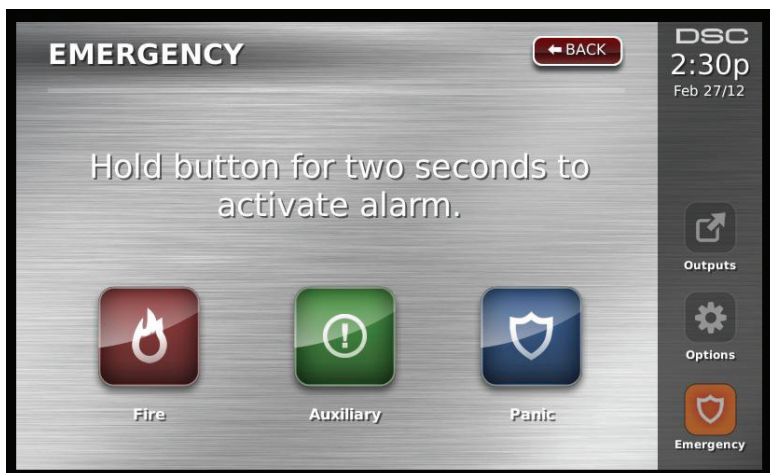
The system status (i.e., Ready, Armed, Exit Delay etc.) is displayed at the top of the screen.

**Figure 1 - Welcome Screen**



## Emergency Key

**Figure 2 - Emergency Screen**



**When the emergency key is pressed, a new page will appear with:**

**Fire** Fire Assistance Required. Press and hold for 2 seconds to activate.

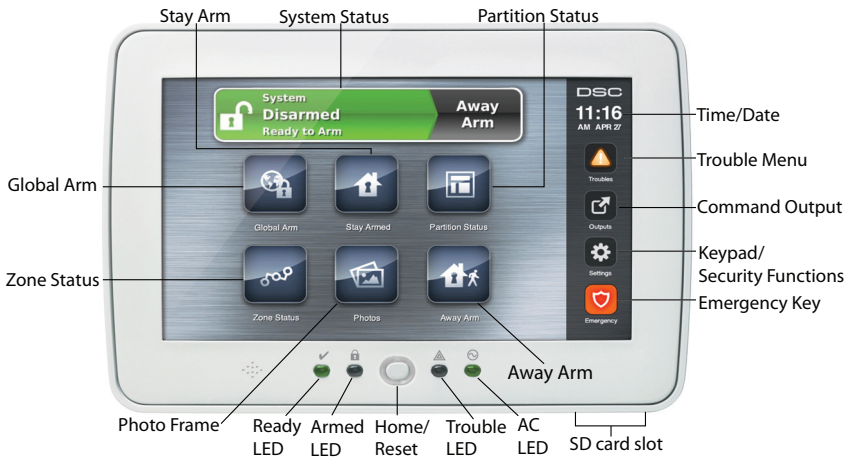
**Ambulance** Medical or other Assistance Required. Press and hold for 2 seconds to activate.

**Panic** Police Assistance Required. Press and hold for 2 seconds to activate.

**IMPORTANT NOTE:** The Ambulance and Panic keys are ON by default. The Fire key will not function unless programmed by the Installer. Please ask your installer if the Fire, Ambulance and Panic keys are enabled.

**NOTE:** These events are recorded in the log.

**Figure 3 - Controls & Indicators**



## Arming and Disarming the System

### Stay Arm (Arming the Perimeter)

Ask your alarm company if this function is available on your system.

Stay arming bypasses the interior protection (i.e., motion sensors) and arms the perimeter of the system (i.e., doors and windows). Close all sensors (i.e., stop motion and close doors). The Ready (✓) indicator should be on. Press the Stay Arm button and/or enter your Access Code and do not leave the premises (if your installer has programmed this button). During exit delay, the Armed (🔒) and Ready (✓) indicators turn on to visually indicate that the system is arming.

When the exit delay expires, the Ready LED turns off, the Armed LED remains on and the keypad stops sounding to indicate that the alarm system is armed.

**NOTE:** For SIA FAR listed panels, the Stay Arming exit delay will be twice as long as the Away Arming exit delay.

### Silent Exit Delay

If the system is armed using the Stay Arm button or using the "No Entry" Arming method ([\*][9][access code]), the audible progress annunciation (keypad buzzer) is silenced and the exit time doubled for that exit period only (CP-01 versions only).

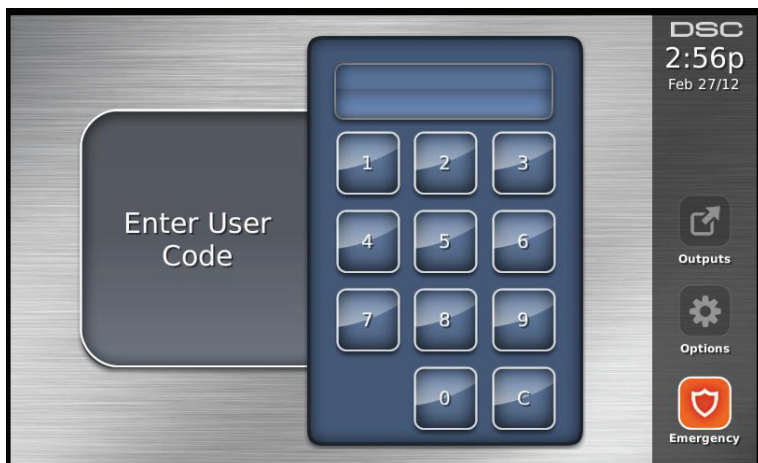
**NOTE:** For non CP-01 versions, Standard exit time is used.

When Stay Arm is selected from the Home screen:

- The display indicates "Exit Delay in Progress," and the pre-programmed exit delay begins.
- The Armed LED Indicator turns on.

**NOTE:** If Quick Arm is not enabled by the installer, then a numerical keypad is displayed (see Figure 4). Enter a valid access code to proceed.

**Figure 4 - Keypad**



If Disarm is selected during the exit delay, a numeric keypad is displayed.

- Enter (tap) your access code.
- The arming sequence is aborted and the system returns to the Home screen.
- The Armed LED turns OFF.

At the end of the pre-programmed exit delay:

- The Disarm screen is displayed.
- The Ready Indicator turns OFF.
- "Stay Armed-Bypass" is displayed in the Status Bar.

**NOTE:** *This screen will go into stand-by mode after 15 minutes. Tap the screen to restore the display.*



## Disarm

If Disarm is selected:

- A numerical keypad is displayed.
- Enter your Access Code in the keypad.
- The system returns to the Home screen and the red Armed indicator turns OFF.
- The alarm status is momentarily displayed in the status bar, then "Ready" is displayed.
- The green Ready indicator turns ON.

Disarming Error

If your code is invalid, the system will not disarm and a 2-second error tone will sound. If this happens, press # and try again.

## Away Arm

When Away Arm is selected:

- Enter a valid access code to proceed.
- The Armed LED Indicator turns ON.
- "Exit Delay in Progress" is displayed in the Status Bar. The pre-programmed exit delay begins.
- The touchscreen "beeps" at a 1-second urgency interval during the exit delay. Then 3 beeps sound in the last 10 seconds.

**NOTE: If Quick Arm is not enabled by the installer, a numerical keypad is displayed.**

If Disarm is selected during the exit delay:

- A numeric keypad is displayed. Tap your access code.
- The Arming sequence is aborted and the system returns to the Home screen.
- The Armed LED turns OFF.

At the end of the pre-programmed exit delay:

- The Disarm screen is displayed.
- The Ready Indicator turns OFF.
- "Away Armed" is displayed in the Status Bar.

## Bell/Siren Sounds After Away Arming

### *Audible Exit Fault*

In an attempt to reduce false alarms, the Audible Exit Fault is designed to notify you of an improper exit when arming the system in the Away mode. In the event that you fail to exit the premises during the allotted exit delay period, or if you do not securely close the Exit/Entry door, the system will notify you that it was improperly armed in two ways: the keypad will emit one continuous beep and the bell or siren will sound.

Your installer will tell you if this feature has been enabled on your system. If this occurs:

1. Re-enter the premises.
2. Enter your access code to disarm the system. You must do this before the entry delay timer expires.
3. Follow the Away arming procedure again, making sure to close the entry/exit door properly.

### *Arming Error*

An error tone will sound if the system is unable to arm. This will happen if the system is not ready to arm (i.e., sensors are open), or if an incorrect user code has been entered. If this happens, ensure all sensors are secure. Press [#] and try again, ensuring that a valid access code is entered. Please check with your installer to determine if arming is inhibited by any other means.

## Remote Arming and Disarming

The system can be armed and/or disarmed using the remote wireless key. When arming the system by using the Arm button on the wireless key, the system will acknowledge the command by sounding a single bell squawk (if bell squawk is enabled). When disarming using the Disarm button on the wireless key, the system will acknowledge the command by sounding two bell squawks (if bell squawk is enabled) that can be heard from the exterior of the premises.

## When Alarm Sounds

The system can generate 4 different alarm sounds:

- Temporal/ pulsed siren = Fire Alarm
- 4 beeps, 5-second pause, 4 beeps = Carbon Monoxide Alarm
- Continuous siren = Intrusion (Burglary Alarm)

**NOTE: The priority of signals is fire alarm, carbon monoxide alarm then burglary alarm.**

## Intrusion (Burglary) Alarm Continuous Siren



If you are unsure of the source of the alarm, approach with caution! If the alarm was accidental, enter your Access Code to silence the alarm. Call your central station to avoid a dispatch.

## Fire Alarm Pulsed Siren



***Follow your emergency evacuation plan immediately!***

If the fire alarm was accidental (e.g., burned toast, bathroom steam, etc.), enter your Access Code to silence the alarm. Call your central station to avoid a dispatch. Ask your alarm company if your system has been equipped with fire detection. To reset the detectors, see the Sensor Reset section.

## Wireless Carbon Monoxide Alarm

Activation of your CO alarm indicates the presence of carbon monoxide (CO), which can be fatal. During an alarm, the red LED on the CO detector flashes rapidly and the buzzer sounds with a repeating cadence of: 4 quick beeps, 5-second pause, 4 quick beeps. Also, during an alarm, the siren connected to the control panel produces a repeating cadence of 4 quick beeps, 5-second pause, 4 quick beeps. The keypad will also provide audible and visual indication of the CO alarm.

### ***If an alarm sounds:***

1. Operate silence button.
2. Call emergency services or your fire department.
3. Immediately move outdoors or to an open door/window.

***WARNING: Carefully review your Carbon Monoxide Installation/User Guide to determine the necessary actions required to ensure your safety and ensure that the equipment is operating correctly. Incorporate the steps outlined in the guide into your evacuation plan.***

## Additional Options

### Photos

***NOTE: For best results, photo resolution should be 800 x 480; please use photo-editing computer software to adjust your photos to the correct size. Photos larger than 1280 x 720 cannot be displayed by the Touchscreen.***

When Photos is selected:

- The photos play automatically from the list of photos on your SD card.
- Tapping the screen once will bring you back to the home page.

### Photo Settings

***WARNING: Disassembling the keypad without first removing the SD card will cause damage to the unit.***

Selecting Picture Frame from the Keypad Configuration menu will allow you to select the pictures for the slide show. You can also program the Transition Time between photos and the duration for the Photo Frame Timeout on this screen.

### Quick Exit

If the system is armed and you need to exit, use the quick exit function to avoid disarming and rearming the system. To activate this function, tap the Quick Exit icon. You have 2 minutes to leave the premises through your exit door. When the door is closed again the remaining exit time is cancelled.

## Time & Date Programming

Tap on Options. Select User Functions [Master Code] and then select Time & Date. Tap on the section you would like to change and use the up/down arrows to change time/date. Once done, press Save.

## Keypad Mode

This option allows the PTK5507 Touchscreen to function as a traditional DSC keypad.

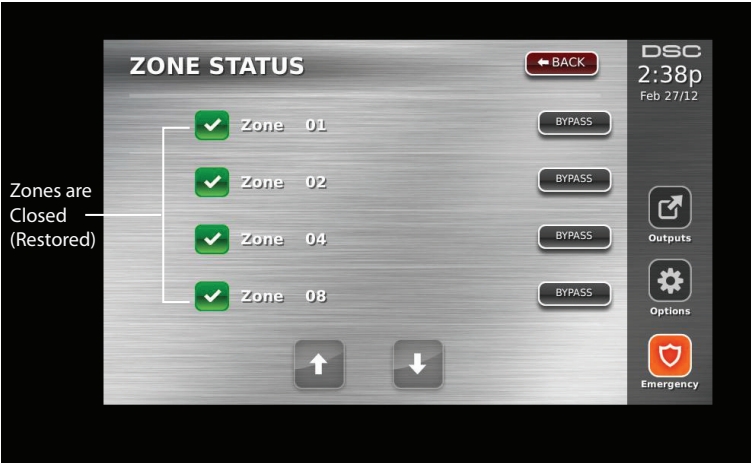
## Door Chime (Chime enable/disable)

The keypad indicates the current state of the door chime function (Enabled or Disabled). To choose the opposite function, tap the 'Chime' icon. Three beeps indicate that the chime is ON (Enabled). One long beep indicates that chime is OFF (Disabled).

**Zone Status**

This screen allows you to view the status of the zones on the system.

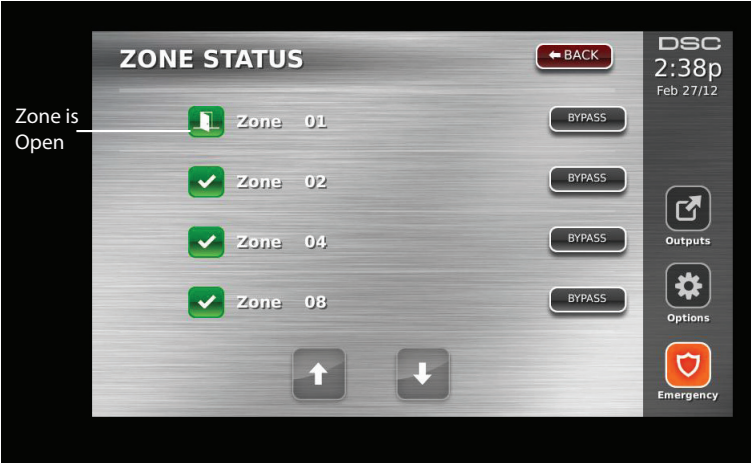
**Figure 5 - Zone Closed**



**Ready** – the zone is closed. (See Figure 5 on page 7).

**Open** – the zone is open and needs to be closed. (See Figure 6 on page 7.)

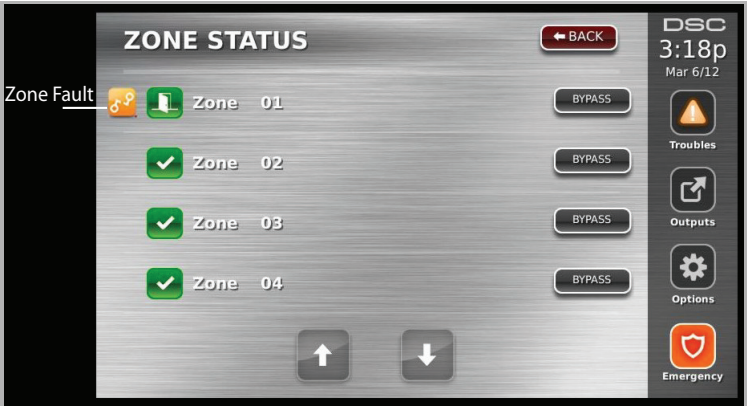
**Figure 6 - Zone Open**



**Trouble** – the alarm panel has detected a technical problem with one or more components of the alarm system e.g., loss of AC power. (See Troubles on page 10.)

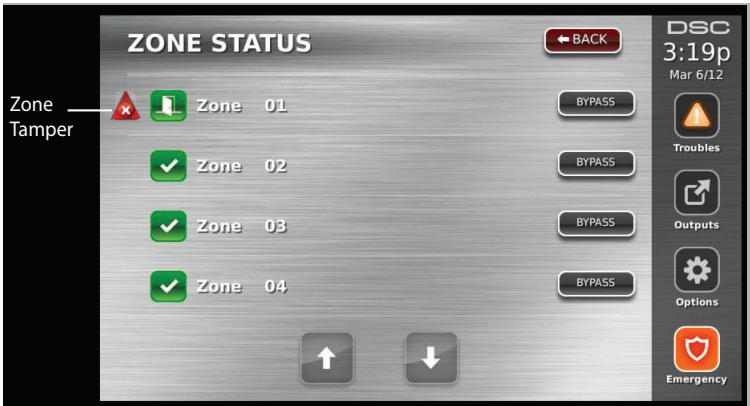
**Fault** – one or more of the zones on your system is not secure e.g., a window or door is open. (See Figure 7 on page 8.)

Figure 7 - Zone Fault



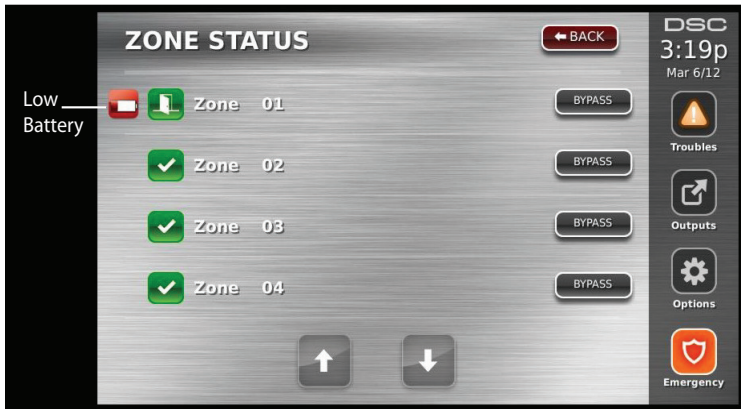
**Tamper** – the zone may have been compromised by an intruder. (See Figure 8 on page 8.)

Figure 8 - Zone Tamper



**Low Battery** – one or more modules in the zone has a low battery. (See Figure 9 on page 9.)

**Figure 9 - Low Battery**



## Bypassed Zones

Use the zone bypass feature when a zone is open but the system needs to be armed. Bypassed zones will not cause an alarm when opened. Bypassing zones reduces the level of security. If you are bypassing a zone because it is not functioning, call a service technician immediately so that the problem can be resolved and your system returned to proper working order.

Ensure that no zones are unintentionally bypassed when arming your system. Zone bypassing can only be performed while the system is disarmed. Bypassed zones are automatically cancelled each time the system is disarmed and must be bypassed again, if required, before the next arming.

**NOTE: 24-hour zones can only be unbypassed manually.**

**NOTE: For security reasons, your installer has programmed the system to prevent certain zones from being bypassed. (e.g., smoke detectors).**

## Bypassing Zones with a PTK5507

When in the Zone Status page, scroll up/down through the desired zones, and tap on the bypass icon to bypass the zone. To unbypass a zone, tap the unbypass icon.


## Troubles

When a trouble condition is detected, the Trouble (▲) or System indicator will turn on, and the keypad will beep every 10 seconds. Press the (▲) key to silence the beeps. Press (▲) to view the trouble condition. The Trouble (▲) or System indicator will flash. The corresponding trouble will light up.

<b>Troubles</b>	<b>Comments</b>	<b>Action</b>
Service Required (Press for more details)	(1) Low Battery (2) Bell Circuit (3) General System Trouble (4) General System Tamper (5) General System Supervision (6) RF Jam Detected (7) PC5204 Low Battery (8) PC5204 AC Loss	Call for service
AC Loss	If the building and/or neighborhood has lost electrical power, the system will continue to operate on battery for several hours.	Call for service
Phone Trouble	The system has detected that the telephone line is disconnected.	Call for service
Communication Failure	The system attempted to communicate with the monitoring station, but failed. This may be due to Telephone Line Fault.	Call for service
Zone Fault	The system is experiencing difficulties with one or more sensors on the system. Press to display the zone.	Call for service
Zone Tamper	The system has detected a tamper condition with one or more sensors on the system. Press to display the zone.	Call for service
Wireless Low Battery	The system has detected a low battery condition with one or more modules/sensors on the system. Press to display the zone, keypad, wireless key(s) and RF Delinquency low battery conditions. Press again to see zone troubles.	Call for service
Loss of Clock	If complete power was lost (AC and Battery), the time and date will need to be reprogrammed.	Reprogram Time & Date

## Alarm Memory

When an alarm occurs, the Memory or System indicator will turn on.

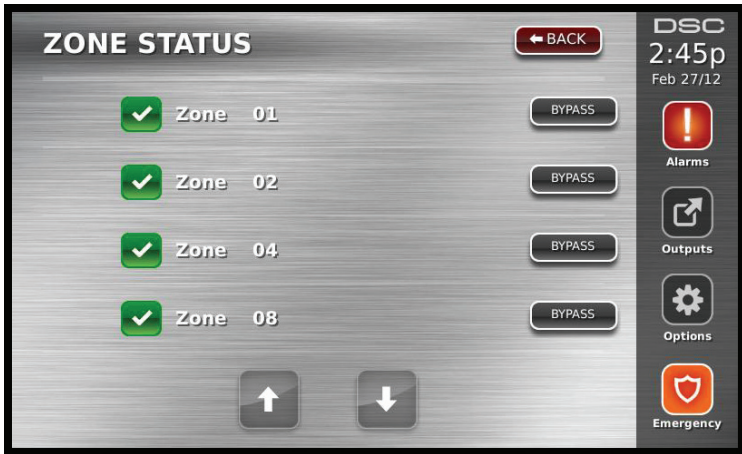
To view which sensor(s) generated the alarm, press Alarms . The sensor number where the alarm occurred will be displayed (e.g. zone 3) (see Figure 10 on page 11).

Use the [<][>] scroll keys to view the sensors in alarm memory.

Press Back or Home to exit. To clear the memory, arm and disarm the system.

If an alarm sounded while armed, the keypad will automatically go to alarm memory when you disarm the system. In this instance, you should approach with caution, as the intruder may still be within the building/premises.

**Figure 10 - Alarms in Memory**



## Sensor Reset

Certain sensors, after having detected an alarm condition, require a reset to exit the alarm condition (e.g., glass break sensors, smoke detectors, etc.). Ask your alarm company if this function is required on your system.

To reset the detectors, press the Reset (Command Output 2 if the installer did not program a label) button on the Outputs screen.

If a sensor fails to reset, it may still be detecting an alarm condition. If the sensor reset is successful, the alarm is cancelled. If unsuccessful, the alarm will reactivate or continue.

**Outputs**

Your installer may have programmed these keys to perform various functions (reset smoke detector after an alarm, open your garage door, etc.) To activate these functions, press Output and then press the appropriate option. See also Sensor Reset on page 11.

**Figure 11 - Outputs**



**Options**

From the Options menu on the right side of the Touchscreen (see Figure 12 on page 12), the following can be accessed:

- Access Codes
- Installer Menu
- User Functions
- Keypad Config
- Chime Enabled/Disabled
- Arming
- Partition Status
- Keypad Mode

**Figure 12 - Options**





## Access Codes

When Access Codes is selected from the Options menu, the keypad prompts for a Master Code. When a valid Master Code is entered, a numeric keypad is displayed with arrows to scroll to the desired user to add/edit. Press the select button to enter the user options.

**Set Access Code** – adds/edits the 4-digit code.

**Set Partitions** – assigns the user to partitions.

**User Options** – enables/disables different options for the user.

**Delete User** – deletes the user from the system.

The access codes have programmable attributes which allow zone bypassing, remote access using the ESCORT5580TC or one-time use activation.

**Master Code (Access Code 40)** - The master code, if programmed, can only be changed by the installer.

**Supervisor Codes** - These codes can be used to program additional codes which have equal or lesser attributes. Once programmed, the supervisor codes receive the master code's attributes. These attributes are changeable. Any user code can be made a supervisor code by enabling User Code Attribute 1 (please see below for details).

**Duress Codes** - Duress codes are standard user codes that transmit the Duress Reporting Code when entered to perform any function on the system. Any user code can be made a duress code by enabling User Code Attribute 2 (please see below for details).

**NOTE:** *Duress codes are not valid when entering User Programming, Master Functions or Installer's sections.*

**NOTE:** *Access codes cannot be programmed as a duplicate or as a "Code +/- 1".*

## User Code Attributes

1. The default attributes of a new code will be the attributes of the code used to enter User Programming whether it is a new code or an existing code being programmed.
2. System Master Code 40 has partition access for all partitions, as well as attributes 3-4 ON by default.

**NOTE:** *These attributes are not changeable.*

## Inherent Attributes (all codes except installer and maintenance)

**Arm/Disarm** - Any access code with partition access enabled will be valid for arming and disarming that partition.

**Command Outputs ([\*][7][1], [\*][7][2], [\*][7][3], and [\*][7][4])** - If these outputs require access code entry, any Access Code with partition access will be valid for performing the command output functions on that partition.

## Programmable Attributes

- |                           |  |
|---------------------------|--|
| 1. Supervisor Code        | 5. For Future Use                        |
| 2. Duress Code            | 6. For Future Use                        |
| 3. Zone Bypassing Enabled | 7. Bell Squawk upon Arming/<br>Disarming |
| 4. ESCORT Access          | 8. One Time Use Code                     |

## Bell Squawk Attribute

This attribute is used to determine whether an access code should generate an arming/disarming Bell Squawk upon entry of the code for Away arming. The wireless keys with access codes associated with them may generate Arming/Disarming Bell squawks. If desired, this option may be used with codes that are manually entered. Please contact your installer to have this programmed.

**NOTE:** *The Master Code cannot use the Bell Squawk attribute, but is required to enable it for other codes.*

**NOTE:** *This feature cannot prevent the Arming/Disarming squawks from being generated if an access code assigned to a wireless key is manually entered at a keypad.*

## Partition Assignment Mask

The master code has access to all partitions, and cannot be modified.

### ***Partition Assignment Mask ([\*][5][Master/Supervisor Code][98][Code])***

1. Partition One Access (available for PC1616/PC1832/PC1864)
2. Partition Two Access (available for PC1616/PC1832/PC1864)
3. Partition Three Access (available for PC1832/PC1864)
4. Partition Four Access (available for PC1832/PC1864)
5. Partition Five Access (available for PC1864)
6. Partition Six Access (available for PC1864)
7. Partition Seven Access (available for PC1864)
8. Partition Eight Access (available for PC1864)

### ***Notes on Access Codes and Programming***

1. The master code's attributes cannot be changed.
2. When a new code is programmed in User Programming it will be checked against all other codes in the system. If a duplicate code is found, an error tone is given and the code is returned to what it was before it was changed. This applies to both 4 and 6-digit codes.

## **Erasing an Access Code**

To erase a code, select the code and choose Delete User. The system will delete the code immediately and the user will be returned to select another code.

## **Installer Menu**

These functions are for the installer's use only.

## **User Functions**

First disarm the system then enter Options, User Functions, then Master Code. This command is used to gain access to the following list of master functions of the system:

### **Time and Date**

Enter desired time and date.

### **Auto-Arm Time**

The system can be programmed to arm at a programmed time each day, per partition. Upon entry of this section, enter the desired Auto-Arm time for each day of the week.

At the selected Auto-Arm time, the keypad buzzers will sound for a programmed amount of time (programmable by the installer only) to warn that an auto-arm is in progress. The bell can also be programmed to squawk once every 10 seconds during this warning period. When the warning period is complete, the system will arm with no exit delay and in the Away Mode.

Auto-Arming can be cancelled or postponed by entering a valid access code only during the programmed warning period. Auto-Arming will be attempted at the same time the next day. When the Auto-Arming process is cancelled or postponed, the Auto-arm Cancellation Reporting Code will be transmitted (if programmed).

If arming is inhibited by one of the following, the Auto-Arm Cancellation transmission will be communicated:

- AC / DC Inhibit Arm
- Latching System Tamper
- Zone Expander Supervisory Fault

### **Enable DLS/Allow System Service**

If enabled, the installer will be able to access Installer Programming via remote (DLS). In case of DLS access this provides a window where rings will be detected by the panel. The DLS window will remain open for 6 hrs, during which time the installer will be able to enter DLS an unlimited number of times. After the 6-hr window has expired, Installer's Programming will be unavailable again until the window is re-opened.

### **Event Buffer**

Displays the date, time and the full description of the event.

The Log is organized from the most recent event (Top) to past events (Down).

The Left arrow scrolls forward in time.

The Right arrow scrolls back in time.

The Back returns you to the Home screen.

This screen will time out to the Home screen after 30 seconds of inactivity.

## System Test

The system's Bell Output (2s), Keypad Lights and Communicator are tested. This test will also measure the panel's standby battery.

## Auto-Arm/Disarm Control

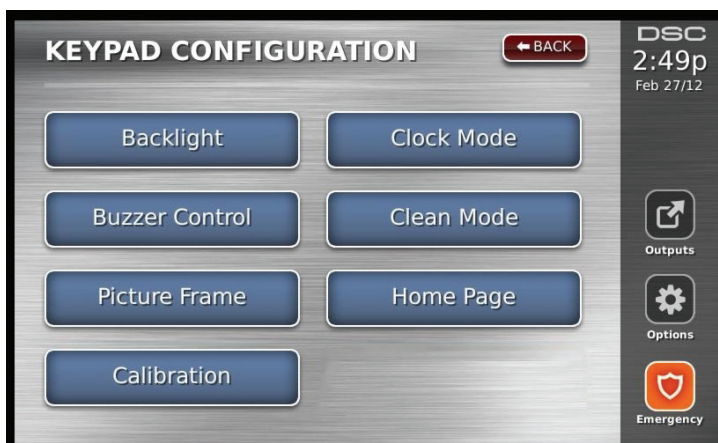
Pressing Auto-Arm while in the User Function menu will enable (three beeps) or disable (one long beep) the Auto-Arm and Auto-Disarm feature, by partition. With this feature enabled, the panel will automatically arm in the Away mode (Stay/Away zones active) or disarm at the same time each day. The Auto-Arm time is programmed with the Auto-Arm time button. Auto-Disarm must be programmed by the system installer.

## User Call-up

If enabled by the installer, the panel will make 1 attempt to call the downloading computer. The downloading computer must be waiting for the panel to call before downloading can be performed.

## Keypad Configuration

Figure 13 - Keypad Configuration



**Backlight** – sets the brightness and screen timeout of the Touchscreen.

**Buzzer Control** – sets the buzzer volume of the Touchscreen.

**Picture Frame** – selects the pictures that will be displayed on the slideshow.

**Calibration** – calibrates the Touchscreen.

**Clock Mode** – displays the digital clock if there is no activity for 30 seconds.

**Clean Mode** – allows the user to touch (i.e., clean) the screen without enabling or disabling any functions. The screen will remain in this mode for 30 seconds (See Figure 14 on page 16), then return to the Keypad Configuration screen ( See Figure 13 on page 15).

**Figure 14 - Clean Mode**



**Home Page** – can be configured in one of two different views, Classic (square buttons) and Contemporary (rondel).

### **Chime Enabled/Disabled**

Door chime - To turn the door chime function On/Off, tap the Chime icon. There are 3 beeps to indicate that the chime is ON, 1 long beep to indicate the chime is OFF.

### **Arming**

**Stay Arm** – arms the system in Stay mode.

**Away Arm** – arms the system in Away mode.

**Night Arm** – To fully arm the system when it has been armed in Stay Mode, press Night Arm button. All interior zones will now be armed except for devices programmed as Night Zones. Night zones are only armed in Away mode. This permits limited movement within the premises when the system is fully armed. Ensure that your installer has provided you with a list identifying zones programmed as night zones. When the interior zones have been activated (i.e., Night Arm), you must enter your access code to disarm the system to gain access to interior areas that have not been programmed as night zones.

**Quick Exit** – see Quick Exit on page 6.

**Global Away Arm** – arms all partitions to which the User Code is assigned, in Away mode.

**Global Stay Arm** – arms all partitions to which the User Code is assigned, in Stay mode.

**No Entry Arm** – arms the system with no entry.

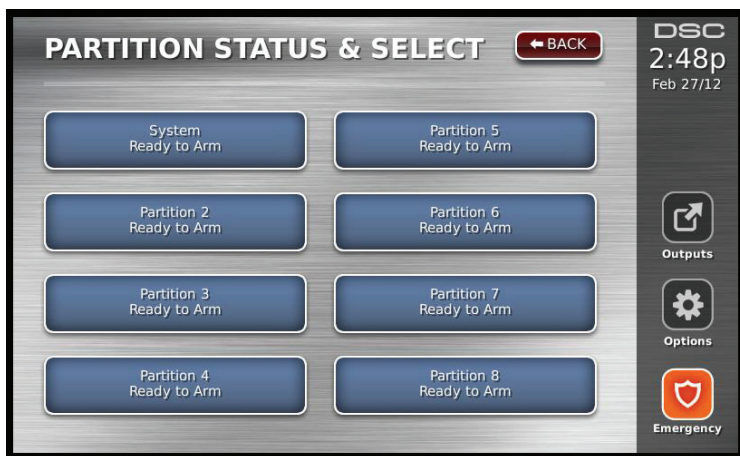
## Partition Status

To view the partition status, press Options, User Functions, then Partition Status. The keypad shows basic status for up to 8 partitions, depending on the configuration of your system. Each partition is identified along with its current status.

### PK5500/RFK5500/RFK5564/PTK5507 Global Status Screen

A keypad normally assigned to a partition can be temporarily assigned (“loaned”) to Global mode, in order to program functions that affect the entire system and not just one partition. Figure 15 on page 17 is an example of a keypad loaned to Global mode.

**Figure 15 - Partition Status**



## Keypad Mode

This option allows the PTK5507 Touchscreen to function as a traditional DSC keypad.

## Reference Sheets

Fill out the following information for future reference and store this guide in a safe place.

### System Information

Enabled?



[F] FIRE



[A] AUXILIARY



[P] PANIC



The Exit Delay Time is \_\_\_\_\_ seconds.



The Entry Delay Time is \_\_\_\_\_ seconds.

For Service

### Central Station Information

Account#: \_\_\_\_\_ Telephone#: \_\_\_\_\_

### Installer Information:

Company: \_\_\_\_\_ Telephone#: \_\_\_\_\_

### Battery Installation / Service Date:

---

---

---



If you suspect a false alarm signal has been sent to the central monitoring station, call the station to avoid an unnecessary response.

**Access Codes**

PC1616/PC1832/PC1864

Master Code [40]: \_\_\_\_\_

Code	Access Code	Code	Access Code	Code	Access Code	Code	Access Code
01		13		25		42	
02		14		26			
03		15		27			
04		16		28			
05		17		29			
06		18		30			
07		19		31			
08		20		32			
09		21		33			
10		22		34			
11		23		40			
12		24		41			

**Sensor / Zone Information**

Sensor	Protected Area	Sensor Type	Sensor	Protected Area	Sensor Type
01			33		
02			34		
03			35		
04			36		
05			37		
06			38		
07			39		
08			40		
09			41		
10			42		
11			43		
12			44		
13			45		
14			46		
15			47		
16			48		
17			49		
18			50		
19			51		
20			52		
21			53		
22			54		
23			55		
24			56		
25			57		
26			58		
27			59		
28			60		
29			61		
30			62		
31			63		
32			64		



## Testing Your System

**NOTE:** *If you are going to perform a System Test, call your Monitoring Station to inform them when you begin and also when you end the test.*

## Testing Your Keypad Sounder and Siren

The System Test performs a two-second check of the keypad sounder and bell or siren, in addition to testing the keypad status lights and the panel backup battery.

1. Press Options, User Functions [Master Code], then System Test. The following will occur:
  - The system activates all keypad sounders and bells or sirens for 2 seconds. All keypad lights turn ON.
  - PK5500/RFK5500/RFK5564 keypads will light all pixels.
  - The Ready, Armed, and Trouble LEDs will flash for the duration of the test.
2. To exit the function menu, press [#].

## Testing Your Entire System

All smoke detectors in this installation must be tested by your smoke detector installer or dealer once a year to ensure they are functioning correctly. It is the user's responsibility to test the system weekly (excluding smoke detectors). Ensure you follow all the steps in the "Testing Your Keypad Sounder and Siren" section above.

**NOTE:** *Should the system fail to function properly, call your installation company for service immediately.*

1. Prior to testing, ensure that the system is disarmed and the Ready light is on.
2. Close all zones to return the system to the Ready state.
3. Perform a System Test by following the steps in the "Testing Your Keypad Sounder and Siren" section.
4. To test the zones, activate each detector in turn (e.g., open each door/window or walk in motion detector areas).

**PK5500/RFK5500/RFK5564 keypads** will display the following message when each zone (detector) is activated: "Secure System Before Arming <>", "Secure System or Enter Code" or "Secure or Arm System." Use the [<|>] scroll keys to view which zones are open. The message will disappear when the zones are closed.

**On a PK5501/RFK5501 keypad**, the display says "Open" when any zone (detector) is activated. To see which zones are open, press [#]. The keypad will scroll the numbers of all open zones.

**On a PK5508/PK5516/RFK5508/RFK5516 keypad**, the zone light turns ON when the zone (detector) is activated. The zone light turns OFF when the zone is closed (e.g., door or window closed).

**On a PTK5507 keypad**, the following message will be displayed when each zone (detector) is activated: "Ready to Force," "Not Ready". Use the zone status button to view which zones are open. The message will disappear when the zones are closed.

**NOTE:** *Some features described above will not be functional unless enabled by your installer. Ask your installer which features are functional on your system.*

## Walk Test Mode

The installer can initiate a Walk Test mode for the system. While in Walk Test mode, the Ready, Armed, and Trouble LEDs will flash to indicate that Walk Test is active. When the system automatically terminates the Walk Test mode, it will announce with an audible warning (5 beeps every 10 seconds), beginning five minutes prior to the termination of the test.

## Allowing Computer Access To Your System

From time to time, your installer may need to send information to or retrieve information from your security system. Your installer will do this by having a computer call your system over the telephone line. You may need to prepare your system to receive this 'downloading' call. To do this:

1. Press [\*][6][Master code][5] at any keypad or
2. Press Options, User Functions [Master Code], then Enable DLS from the Touchscreen.

This allows downloading for a limited period of time. During this time, the system will answer incoming downloading calls.

For more information on this feature, please ask your installer.

## Guidelines for Locating Smoke Detectors and CO Detectors

The following information is for general guidance only and it is recommended that local fire codes and regulations be consulted when locating and installing smoke and CO alarms.

### Smoke Detectors

Research has shown that all hostile fires in homes generate smoke to a greater or lesser extent. Experiments with typical fires in homes indicate that detectable quantities of smoke precede detectable levels of heat in most cases. For these reasons, smoke alarms should be installed outside of each sleeping area and on each storey of the home.

The following information is for general guidance only and it is recommended that local fire codes and regulations be consulted when locating and installing smoke alarms.

It is recommended that additional smoke alarms beyond those required for minimum protection be installed. Additional areas that should be protected include: the basement; bedrooms, especially where smokers sleep; dining rooms; furnace and utility rooms; and any hallways not protected by the required units. On smooth ceilings, detectors may be spaced 9.1m (30 feet) apart as a guide. Other spacing may be required depending on ceiling height, air movement, the presence of joists, uninsulated ceilings, etc. Consult National Fire Alarm Code NFPA 72, CAN/ULC-S553-02 or other appropriate national standards for installation recommendations.

- Do not locate smoke detectors at the top of peaked or gabled ceilings; the dead air space in these locations may prevent the unit from detecting smoke.
- Avoid areas with turbulent air flow, such as near doors, fans or windows. Rapid air movement around the detector may prevent smoke from entering the unit.
- Do not locate detectors in areas of high humidity.
- Do not locate detectors in areas where the temperature rises above 38°C (100°F) or falls below 5°C (41°F).

Smoke detectors should always be installed in USA in accordance with Chapter 11 of NFPA 72, the National Fire Alarm Code: 11.5.1.1.

Where required by applicable laws, codes, or standards for a specific type of occupancy, approved single- and multiple-station smoke alarms shall be installed as follows:

1. In all sleeping rooms and guest rooms.
2. Outside of each separate dwelling unit sleeping area, within 6.4 m (21 ft) of any door to a sleeping room, the distance measured along a path of travel.
3. On every level of a dwelling unit, including basements.
4. On every level of a residential board and care occupancy (small facility), including basements and excluding crawl spaces and unfinished attics.
5. In the living area(s) of a guest suite.

6. In the living area(s) of a residential board and care occupancy (small facility).

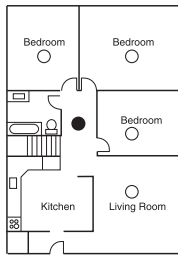


Figure 1

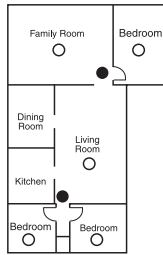


Figure 2

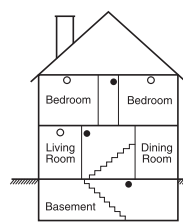
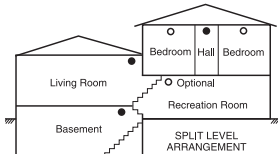


Figure 3



○ Smoke detectors for better protection  
● Smoke detectors for minimum protection

Figure 3a

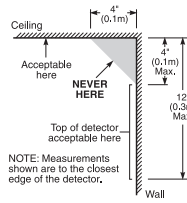


Figure 4

## Carbon Monoxide Detectors

Carbon monoxide is colorless, odorless, tasteless, and very toxic. It also moves freely in the air. CO detectors can measure the concentration and sound a loud alarm before a potentially harmful level is reached. The human body is most vulnerable to the effects of CO gas during sleeping hours; therefore, CO detectors should be located in or as near as possible to sleeping areas of the home. For maximum protection, a CO alarm should be located outside primary sleeping areas or on each level of your home. Figure 5 indicates the suggested locations in the home.

Do NOT place the CO alarm in the following areas:

- Where the temperature may drop below  $-10^{\circ}\text{C}$  or exceed  $40^{\circ}\text{C}$
- Near paint thinner fumes
- Within 5 feet (1.5m) of open flame appliances such as furnaces, stoves and fireplaces
- In exhaust streams from gas engines, vents, flues or chimneys
- Do not place in close proximity to an automobile exhaust pipe; this will damage the detector

**PLEASE REFER TO THE CO DETECTOR INSTALLATION AND OPERATING INSTRUCTION SHEET FOR SAFETY INSTRUCTIONS AND EMERGENCY INFORMATION.**

## Household Fire Safety Audit

Read this section carefully for important information about fire safety.

Most fires occur in the home. To minimize this danger, we recommend that a household fire safety audit be conducted and a fire escape plan be developed.

1. Are all electrical appliances and outlets in a safe condition? Check for frayed cords, overloaded lighting circuits, etc. If you are uncertain about the condition of your electrical appliances or household service, have a professional evaluate these units.
2. Are all flammable liquids stored safely in closed containers in a well-ventilated cool area? Cleaning with flammable liquids should be avoided.
3. Are fire-hazardous materials (e.g., matches) well out of reach of children?
4. Are furnaces and wood-burning appliances properly installed, clean and in good working order? Have a professional evaluate these appliances.

## Fire Escape Planning

There is often very little time between the detection of a fire and the time it becomes deadly. It is thus very important that a family escape plan be developed and rehearsed.

1. Every family member should participate in developing the escape plan.

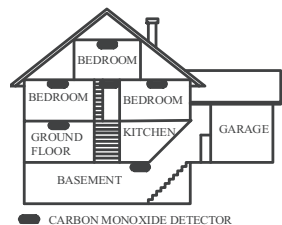


Figure 5

2. Study the possible escape routes from each location within the house. Since many fires occur at night, special attention should be given to the escape routes from sleeping quarters.
3. Escape from a bedroom must be possible without opening the interior door.

Consider the following when making your escape plans:

- Make sure that all border doors and windows are easily opened. Ensure that they are not painted shut, and that their locking mechanisms operate smoothly.
- If opening or using the exit is too difficult for children, the elderly or handicapped, plans for rescue should be developed. This includes making sure that those who are to perform the rescue can promptly hear the fire warning signal.
- If the exit is above the ground level, an approved fire ladder or rope should be provided as well as training in its use.
- Exits on the ground level should be kept clear. Be sure to remove snow from exterior patio doors in winter; outdoor furniture or equipment should not block exits.
- Each person should know the predetermined assembly point where everyone can be accounted for (e.g., across the street or at a neighbour's house). Once everyone is out of the building, call the fire department.
- A good plan emphasizes quick escape. Do not investigate or attempt to fight the fire, and do not gather belongings as this can waste valuable time. Once outside, do not re-enter the house. Wait for the fire department.
- Write the fire escape plan down and rehearse it frequently so that should an emergency arise, everyone will know what to do. Revise the plan as conditions change, such as the number of people in the home, or if there are changes to the building's construction.
- Make sure your fire warning system is operational by conducting weekly tests. If you are unsure about system operation, contact your installer.
- We recommend that you contact your local fire department and request further information on fire safety and escape planning. If available, have your local fire prevention officer conduct an in-house fire safety inspection.



**IMPORTANT - READ CAREFULLY: DSC Software purchased with or without Products and Components is copyrighted and is purchased under the following license terms:**

- This End-User License Agreement ("EULA") is a legal agreement between You (the company, individual or entity who acquired the Software and any related Hardware) and Digital Security Controls, a division of Tyco Safety Products Canada Ltd. ("DSC"), the manufacturer of the integrated security systems and the developer of the software and any related products or components ("HARDWARE") which You acquired.
- If the DSC software product ("SOFTWARE PRODUCT" or "SOFTWARE") is intended to be accompanied by HARDWARE, and is NOT accompanied by new HARDWARE, You may not use, copy or install the SOFTWARE PRODUCT. The SOFTWARE PRODUCT includes computer software, and may include associated media, printed materials, and "online" or electronic documentation.
- Any software provided along with the Software Product that is associated with a separate end-user license agreement is licensed to You under the terms of that license agreement.
- By installing, copying, downloading, storing, accessing or otherwise using the Software Product, You agree unconditionally to be bound by the terms of this EULA, even if this EULA is deemed to be a modification of any previous arrangement or contract. If You do not agree to the terms of this EULA, DSC is unwilling to license the Software Product to You, and You have no right to use it.

**SOFTWARE PRODUCT LICENSE**

The SOFTWARE PRODUCT is protected by copyright laws and international copyright treaties, as well as other intellectual property laws and treaties. The SOFTWARE PRODUCT is licensed, not sold.

**1. GRANT OF LICENSE** This EULA grants You the following rights:

- (a) Software Installation and Use - For each license You acquire, You may have only one copy of the SOFTWARE PRODUCT installed.
- (b) Storage/Network Use - The SOFTWARE PRODUCT may not be installed, accessed, displayed, run, shared or used concurrently on or from different computers, including a workstation, terminal or other digital electronic device ("Device"). In other words, if You have several workstations, You will have to acquire a license for each workstation where the SOFTWARE will be used.
- (c) Backup Copy - You may make back-up copies of the SOFTWARE PRODUCT, but You may only have one copy per license installed at any given time. You may use the back-up copy solely for archival purposes. Except as expressly provided in this EULA, You may not otherwise make copies of the SOFTWARE PRODUCT, including the printed materials accompanying the SOFTWARE.

**2. DESCRIPTION OF OTHER RIGHTS AND LIMITATIONS**

- (a) Limitations on Reverse Engineering, Decompilation and Disassembly - You may not reverse engineer, decompile, or disassemble the SOFTWARE PRODUCT, except and only to the extent that such activity is expressly permitted by applicable law notwithstanding this limitation. You may not make any changes or modifications to the Software, without the written permission of an officer of DSC. You may not remove any proprietary notices, marks or labels from the Software Product. You shall institute reasonable measures to ensure compliance with the terms and conditions of this EULA.
- (b) Separation of Components - The Software Product is licensed as a single product. Its component parts may not be separated for use on more than one HARDWARE unit.

(c) Single INTEGRATED PRODUCT - If You acquired this SOFTWARE with HARDWARE, then the SOFTWARE PRODUCT is licensed with the HARDWARE as a single integrated product. In this case, the SOFTWARE PRODUCT may only be used with the HARDWARE as set forth in this EULA.

(d) Rental - You may not rent, lease or lend the SOFTWARE PRODUCT. You may not make it available to others or post it on a server or web site.

(e) Software Product Transfer - You may transfer all of Your rights under this EULA only as part of a permanent sale or transfer of the HARDWARE, provided You retain no copies, You transfer all of the SOFTWARE PRODUCT (including all component parts, the media and printed materials, any upgrades and this EULA), and provided the recipient agrees to the terms of this EULA. If the SOFTWARE PRODUCT is an upgrade, any transfer must also include all prior versions of the SOFTWARE PRODUCT.

(f) Termination - Without prejudice to any other rights, DSC may terminate this EULA if You fail to comply with the terms and conditions of this EULA. In such event, You must destroy all copies of the SOFTWARE PRODUCT and all of its component parts.

(g) Trademarks - This EULA does not grant You any rights in connection with any trademarks or service marks of DSC or its suppliers.

**3. COPYRIGHT** - All title and intellectual property rights in and to the SOFTWARE PRODUCT (including but not limited to any images, photographs, and text incorporated into the SOFTWARE PRODUCT), the accompanying printed materials, and any copies of the SOFTWARE PRODUCT, are owned by DSC or its suppliers. You may not copy the printed materials accompanying the SOFTWARE PRODUCT. All title and intellectual property rights in and to the content which may be accessed through use of the SOFTWARE PRODUCT are the property of the respective content owner and may be protected by applicable copyright or other intellectual property laws and treaties. This EULA grants You no rights to use such content. All rights not expressly granted under this EULA are reserved by DSC and its suppliers.

**4. EXPORT RESTRICTIONS** - You agree that You will not export or re-export the SOFTWARE PRODUCT to any country, person, or entity subject to Canadian export restrictions.

**5. CHOICE OF LAW** - This Software License Agreement is governed by the laws of the Province of Ontario, Canada.

**6. ARBITRATION** - All disputes arising in connection with this Agreement shall be determined by final and binding arbitration in accordance with the Arbitration Act, and the parties agree to be bound by the arbitrator's decision. The place of arbitration shall be Toronto, Canada, and the language of the arbitration shall be English.

**7. LIMITED WARRANTY**

(a) NO WARRANTY - DSC PROVIDES THE SOFTWARE "AS IS" WITHOUT WARRANTY. DSC DOES NOT WARRANT THAT THE SOFTWARE WILL MEET YOUR REQUIREMENTS OR THAT OPERATION OF THE SOFTWARE WILL BE UNINTERRUPTED OR ERROR-FREE.

(b) CHANGES IN OPERATING ENVIRONMENT - DSC shall not be responsible for problems caused by changes in the operating characteristics of the HARDWARE, or for problems in the interaction of the SOFTWARE PRODUCT with non-DSC SOFTWARE or HARDWARE PRODUCTS.

(c) LIMITATION OF LIABILITY; WARRANTY REFLECTS ALLOCATION OF RISK - IN ANY EVENT, IF ANY STATUTE IMPLIES WARRANTIES OR CONDITIONS NOT STATED

IN THIS LICENSE AGREEMENT, DSC'S ENTIRE LIABILITY UNDER ANY PROVISION OF THIS LICENSE AGREEMENT SHALL BE LIMITED TO THE GREATER OF THE AMOUNT ACTUALLY PAID BY YOU TO LICENSE THE SOFTWARE PRODUCT AND FIVE CANADIAN DOLLARS (CAD\$5.00). BECAUSE SOME JURISDICTIONS DO NOT ALLOW THE EXCLUSION OR LIMITATION OF LIABILITY FOR CONSEQUENTIAL OR INCIDENTAL DAMAGES, THE ABOVE LIMITATION MAY NOT APPLY TO YOU.

- (d) **DISCLAIMER OF WARRANTIES** - THIS WARRANTY CONTAINS THE ENTIRE WARRANTY AND SHALL BE IN LIEU OF ANY AND ALL OTHER WARRANTIES, WHETHER EXPRESSED OR IMPLIED (INCLUDING ALL IMPLIED WARRANTIES OF MERCHANTABILITY OR FITNESS FOR A PARTICULAR PURPOSE) AND OF ALL OTHER OBLIGATIONS OR LIABILITIES ON THE PART OF DSC. DSC MAKES NO OTHER WARRANTIES. DSC NEITHER ASSUMES NOR AUTHORIZES ANY OTHER PERSON PURPORTING TO ACT ON ITS BEHALF TO MODIFY OR TO CHANGE THIS WARRANTY, NOR TO ASSUME FOR IT ANY OTHER WARRANTY OR LIABILITY CONCERNING THIS SOFTWARE PRODUCT.
- (e) **EXCLUSIVE REMEDY AND LIMITATION OF WARRANTY** - UNDER NO CIRCUMSTANCES SHALL DSC BE LIABLE FOR ANY SPECIAL, INCIDENTAL, CONSEQUENTIAL OR INDIRECT DAMAGES BASED UPON BREACH OF WARRANTY, BREACH OF CONTRACT, NEGLIGENCE, STRICT LIABILITY, OR ANY OTHER LEGAL THEORY. SUCH DAMAGES INCLUDE, BUT ARE NOT LIMITED TO, LOSS OF PROFITS, LOSS OF THE SOFTWARE PRODUCT OR ANY ASSOCIATED EQUIPMENT, COST OF CAPITAL, COST OF SUBSTITUTE OR REPLACEMENT EQUIPMENT, FACILITIES OR SERVICES, DOWN TIME, PURCHASERS TIME, THE CLAIMS OF THIRD PARTIES, INCLUDING CUSTOMERS, AND INJURY TO PROPERTY.

**WARNING: DSC recommends that the entire system be completely tested on a regular basis. However, despite frequent testing, and due to, but not limited to, criminal tampering or electrical disruption, it is possible for this SOFTWARE PRODUCT to fail to perform as expected.**

**FCC Compliance Statement-CAUTION: Changes or modifications not expressly approved by DSC could void your authority to use this equipment.**

This equipment generates and uses radio frequency energy and if not installed and used properly, in strict accordance with the manufacturer's instructions, may cause interference to radio and television reception. It has been type tested and found to comply with the limits for Class B device in accordance with the specifications in Subpart "B" of Part 15 of FCC Rules, which are designed to provide reasonable protection against such interference in any residential installation. However, there is no guarantee that interference will not occur in a particular installation. If this equipment does cause interference to television or radio reception, which can be determined by turning the equipment off and on, the user is encouraged to try to correct the interference by one or more of the following measures:

- Re-orient the receiving antenna
  - Relocate the alarm control with respect to the receiver
  - Move the alarm control away from the receiver
  - Connect the alarm control into a different outlet so that alarm control and receiver are on different circuits.
- If necessary, the user should consult the dealer or an experienced radio/television technician for additional suggestions. The user may find the following booklet prepared by the FCC helpful: "How to Identify and Resolve Radio/Television Interference Problems". This booklet is available from the U.S. Government Printing Office, Washington, D.C. 20402, Stock # 004-000-00345-4.

This Class B digital apparatus complies with Canadian ICES-003.

Cet appareil numérique de la classe B est conforme à la norme NMB-003 du Canada.

© 2012 Tyco International Ltd. and its Respective Companies. All Rights Reserved.  
Toronto, Canada • [www.dsc.com](http://www.dsc.com) • Printed in Canada

The trademarks, logos, and service marks displayed on this document are registered in the United States [or other countries]. Any misuse of the trademarks is strictly prohibited and Tyco International Ltd. will aggressively enforce its intellectual property rights to the fullest extent of the law, including pursuit of criminal prosecution wherever necessary. All trademarks not owned by Tyco International Ltd. are the property of their respective owners, and are used with permission or allowed under applicable laws.

Product offerings and specifications are subject to change without notice. Actual products may vary from photos. Not all products include all features. Availability varies by region; contact your sales representative.

---

**DSC**

*A Tyco International Company*



29008236R001